

# Chapel Hill – Chauncy Hall

Waltham, Massachusetts | [www.chch.org](http://www.chch.org)



## Fast facts



**Founded in 1971**  
**Coeducational**  
**Boarding**  
**Religious affiliation:** None  
**Location:** 10 miles (20 minutes) from downtown Boston  
**Climate:** Moderate, cold winter with snowfall  
**Airport:** Boston (BOS)  
**Campus size:** 40 acres (16 hectares)  
**Grades:** 9-12 + PG  
**ESL Program:** Yes  
**Enrollment:** 175; 45% boarding  
**International enrollment:** 22%  
**Average class size:** 12  
**Faculty:** 30; 75% with advanced degrees

**Student/faculty ratio:** 5:1  
**Average SAT/ACT:** 1870/28  
**AP courses:** 5  
**Honors courses:** All courses at the honors level  
**Accreditation:** New England Association of Schools and Colleges  
**Noteworthy:** Focused programs permit students to earn a certificate of distinction in mathematics in preparation for university majors in technology or engineering or a certificate of distinction in visual arts for students seeking advanced proficiency and portfolio preparation for university art majors.

## Admission guidelines

**GPA:** 3.0  
**TOEFL:** 65 iBT  
 Skype interview required  
 January entry available  
**Application deadline:** February 1/rolling

## Estimated cost

**Tuition, room and board:** \$60,770  
**ESL:** Included in tuition  
**Extras:** \$7,200

## 100% university placements including:

Boston University  
 Brandeis University  
 Brown University  
 Swarthmore College  
 University of Michigan

## Facilities

2 academic buildings  
 Art barn and theater with dance and yoga studios  
 3 athletic fields  
 Greenhouse  
 Gymnasium  
 Library  
 3 residence halls  
 Student commons

## Courses and activities

### AP courses

Studio art  
 Calculus AB  
 English literature and composition  
 Environmental science  
 US government and politics

### Honors courses

English II  
 Algebra II with trigonometry  
 Pre-calculus  
 French  
 Spanish

### Athletics

Baseball  
 Basketball  
 Cross-country  
 Lacrosse  
 Soccer  
 Softball  
 Volleyball  
 Wrestling

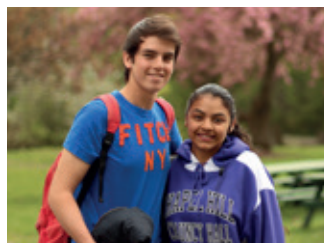
### Arts

Studio arts  
 Art history  
 Ceramics  
 Digital art

Instrumental music  
 Music history and theory  
 Photography  
 Sculpture  
 Vocal ensemble

### Extracurricular activities

Gardening club  
 Gay and straight alliance  
 Improv club  
 Latin culture club  
 Student council  
 Students of color alliance



International Student Education Services, Inc.

Suite 305, 1610 Medical Drive, Pottstown, Pennsylvania 19464, United States of America

T: 001 610 718 5594 | F: 001 610 718 5595 | E: [ISES.Admissions@intoglobal.com](mailto:ISES.Admissions@intoglobal.com) | [www.ises-inc.net](http://www.ises-inc.net)

PART OF THE INTO GROUP